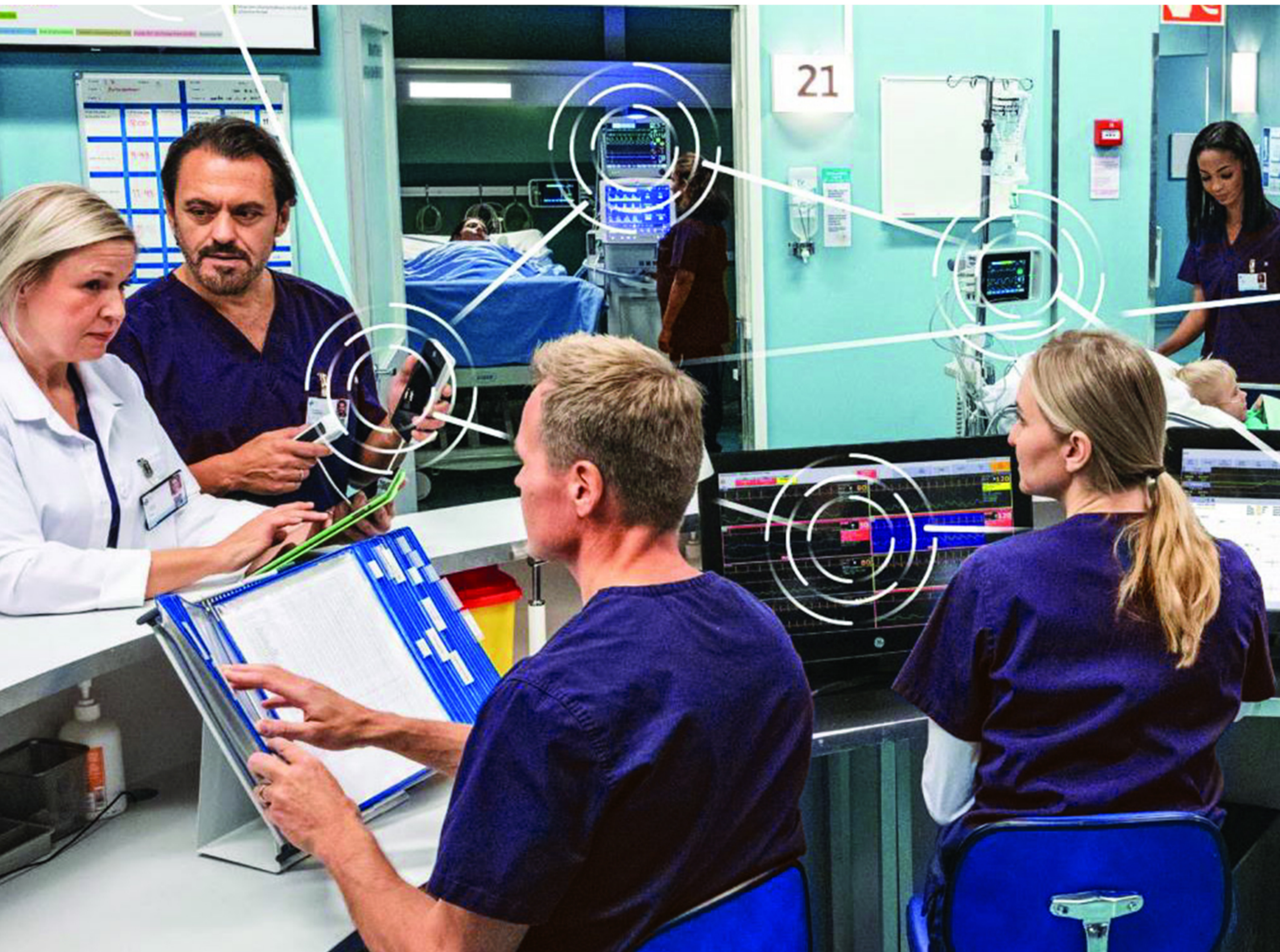




GE HealthCare

CONTINUING EDUCATION



Did you know that “Hands-On” learning provides increased confidence and retention than other training methods¹?

Did you know that 45% of new devices connecting to a network fail, resulting in lost time and delayed patient care?

50% of all Cyber Attacks occur in Healthcare². Is your team prepared?

Well the course you’ve been asking for is BACK...!

GE’s Networking Course - Implementing Digital Technology in Healthcare has been updated, revamped and is now OPEN for enrolments. The course is vendor neutral, and continues to focus on hands-on practical labs.

Register your interest NOW!
GEHC.CustTraining@ge.com

Connectivity is vitally important for today’s medical devices. A healthy network means healthy outcomes for patients. For biomed, being able to understand the hospital network and speak the language of IT is an essential skillset to have. This training aims to empower biomed to actively engage in troubleshooting hospital network issues to minimise downtime of the critical medical devices they support.

UPCOMING COURSES

Classes are limited to 8 participants

Implementing Digital Technology	
Date	Location
06 th Jun 2023 – 29 th Jun 2023	Adelaide, South Australia
18 th July 2023 – 21 st Jul 2023	Perth, Western Australia
15 th Aug 2023 – 18 th Aug 2023	Burnley, Victoria
12 th Sep 2023 – 15 th Sep 2023	Springfield, Queensland
10 th Oct 2023 – 13 th Oct 2023	Mascot, New South Wales
21 st Nov 2023 – 24 th Nov 2023	Mascot, New South Wales

KEY TOPICS:

Clinical Networks -

- IP addressing
- Network switch fundamentals
- Building a network
- Basic connectivity troubleshooting
- VLANs
- Port Security
- Wireless security
- Routing
- Firewalls, demilitarised zones, DHCP
- Wireless network theory & configuration

Hands on Lab -

- Connecting to a network
- Testing for connectivity
- Installing a network printer
- Connecting to a switch, router & access point
- Building, configuring & troubleshooting a switch network using:
 - Switches & VLANs
- Building, configuring & troubleshooting a:
 - Router network
 - Wireless network

COURSE DESCRIPTION:

Implementing Digital Technology in Healthcare

In this course you will learn:

- The key concepts of network connectivity that both enable or impair system communications.
- Through a series of hands-on workshops each student will experience building a network.
- You will cover virtual LANs, port & wireless security.
- In addition, you'll learn the concepts of routing and the roles routers play in your network-forwarding data; acting as firewalls, demilitarised zones, and dynamic host configuration protocol (DHCP) servers; and how routers are dynamically and statically programmed to forward data.

Upon completion of this course, you will be able to do the

- Design, construct, test, and troubleshoot complex “Flat”, “Switched”, “Routed” and “Wireless” networks.
- Understand and utilise clinical networks including IP addressing, network switch fundamentals, VLANs, port security, wireless security, routing, firewalls, demilitarised zones and DHCP.
- Manage computer hardware through the BIOS, driver management and operating systems utilities.
- Computer administration of users, error logs, and troubleshooting tools using both the command line and graphical user interface.
- Develop basic mastery of operating system navigation through use of the GUI and the command line.

Register your interest NOW!
GEHC.CustTraining@ge.com

References:

1. <https://www.forbes.com/sites/ellevate/2021/10/07/why-hands-on-training-is-the-key-to-maximizing-job-success/?sh=580e194a2e5d>
2. <https://www.techbusinessnews.com.au/what-industries-are-most-vulnerable-to-cyberattacks-in-2022/>

©2023 GE HealthCare Inc. - All rights reserved. GE HealthCare Inc reserves the right to make changes in specifications and features shown herein, or discontinue the product described at any time without notice or obligation. This does not constitute a representation or warranty or documentation regarding the product or service featured.

JB01140AU